



INAPORT PROFESSIONAL FOR HEAT

Inaport Professional is the leading data integration and management engine from InaPlex. It lets companies link and integrate data across the entire business, regardless of format and source.

Developed entirely in .NET, Inaport's innovative approach to data consolidation ensures an ease of use that belies its underlying power.

Inaport's interactive component design delivers exceptional results, quickly.

- Profile Editor guides the building of the desired data transformations and source target mappings
- Expression Manager offers almost unlimited potential for data manipulation and correction
- Connector Manager provides extensive links to multiple sources
- Scheduling capability allows transparent, continual data flow

Using Inaport to consolidate data keeps integration costs minimal and helps to deliver better service and services.

Inaport Standard, with reduced functionality, is available for more simple integration requirements. Please contact InaPlex for further details.

**Inaport – data connection
made easy for HEAT**

Where Does Inaport Add Value?

Information flow is critical to the success of a business, and its ability to retain customers and build loyalty. Moving information, however, is often complicated by the number and types of different data sources that are typically involved.

Inaport connects the data dots with ease – no matter where or how information resides – making information flow, and a single client view, achievable for all HEAT® users.

Whether the requirement is for migration of existing data into HEAT, or to share information for a consolidated view, Inaport has the tools that will deliver success.

Inaport can exchange information with almost any source: third party leads, web based services, legacy systems or marketing and ERP systems, to name just a few. It also allows manipulation of data during all stages of data movement.

Each Inaport license is compatible with version 6.4, 7.0 and 8.0 of HEAT. And, as a FrontRange Technology Partner, we are committed to ongoing support of, and synergy with, the HEAT range.

Bentley College praises Inaport.

Bentley College uses Inaport to consolidate information about faculty, staff and students into one data source: HEAT.

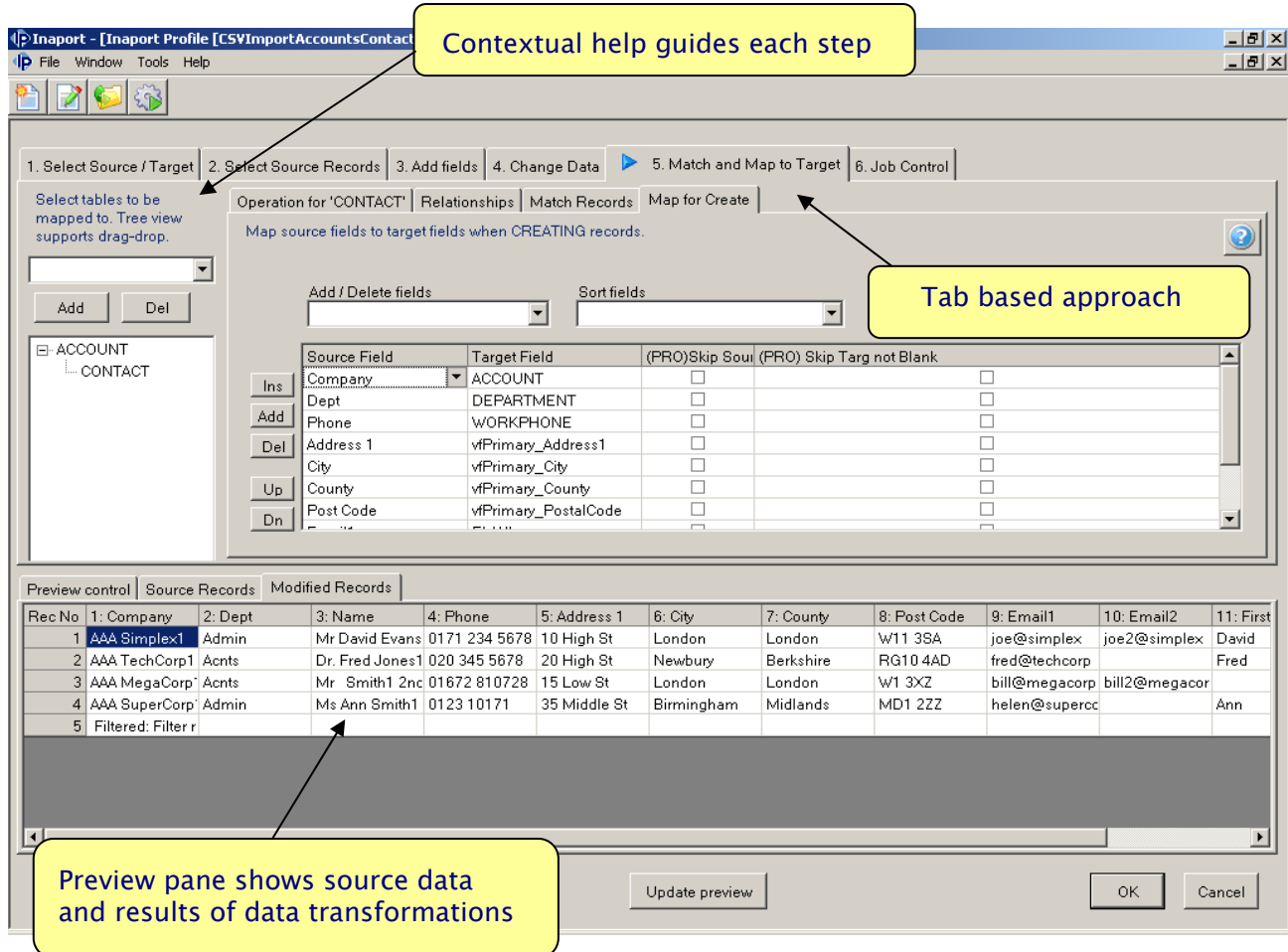
“The nightly updates that Inaport enables have eliminated all manual intervention and keep the HEAT database populated with the most current information.”

Meg Jennings, Bentley College
(Partner: SMA Systems)



How Does Inaport Offer Both Power and Ease-of-Use?

Inaport Professional has three key components that operate interactively and consistently – the Profile Editor (shown below), the Expression Manager, and the Connector Manager. Supported throughout by on-screen guidance, these components provide a flexible, powerful approach to data migration and integration.



Profile Editor:

The Profile Editor is used for building connections, data transformation, and mapping and matching between source and target data repositories.

The tab based approach of the Profile Editor allows quick selection of desired functions, and contextual help guides actions at each step.

At all steps, the preview pane shows results in real time, allowing fine-tuning of expressions without any risk to data integrity.

Expression Manager:

The Expression Manager allows extensive manipulation of both source and target data. With over 150 predefined functions, many data manipulations require almost no thought.

Should a new requirement arise, the full power of regular expressions and SQL is to hand.

Expression creation is facilitated by the use of field names and validity of expressions can be tested as they are created with a real-time "test" function.

Connector Manager:

The Connector Manager makes it easy to define connections between source and target, and automatically updates a connector library with new connectors.

The breadth of this component allows linkages to most data sources, including:

- Web-based data
- External data sources
- Internal ERP and marketing
- Legacy systems
- PC based applications and databases